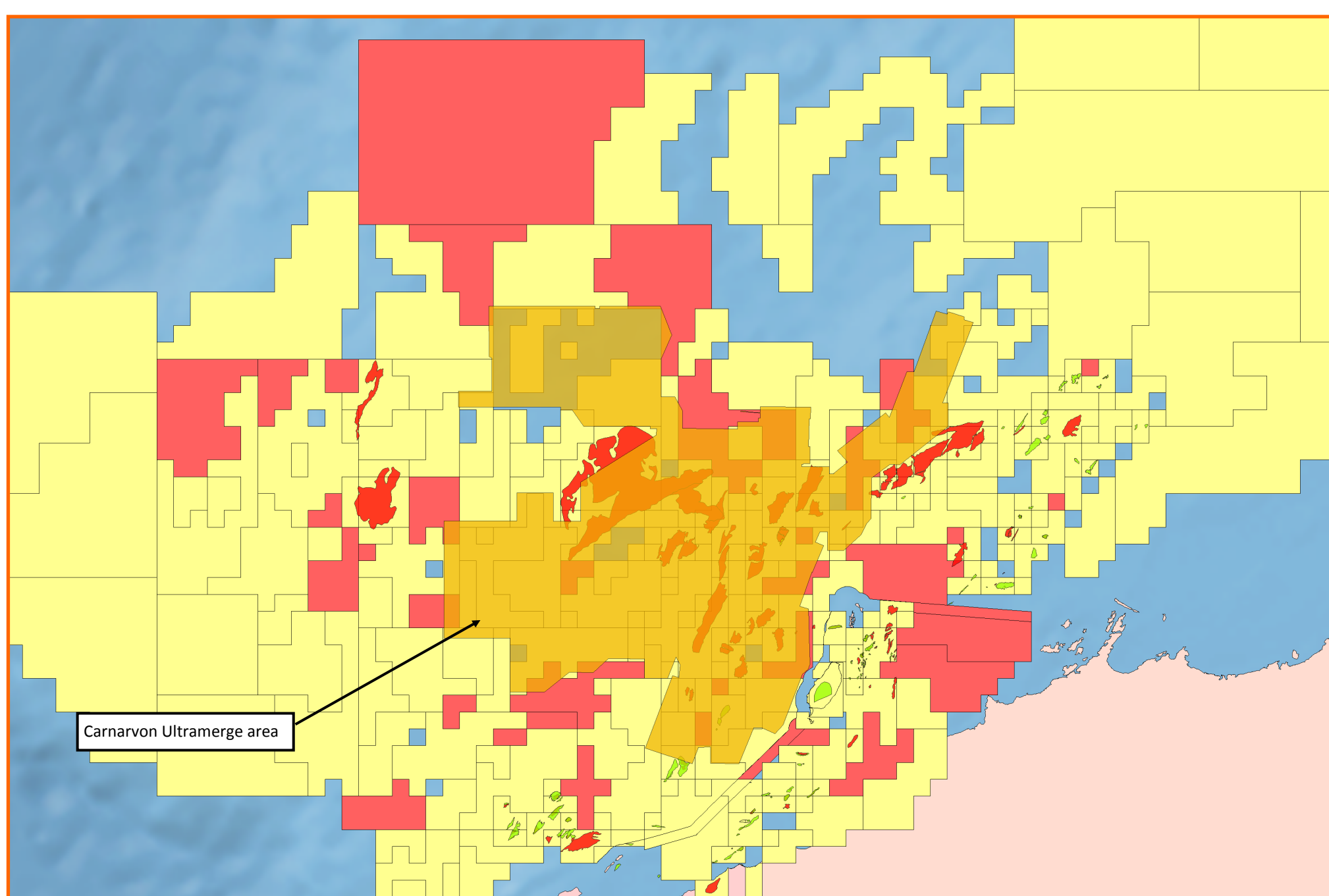


'Carnarvon Ultramerge' is a post stack merge of 21 phased matched and amplitude balanced 3D surveys, outputted to a single 3D volume with a regular bin interval. The data volume covers approximately 33,500 sq kms.



EXPLORATION
DATA SERVICES



Tel: +61 (0) 8 9258 4039 Fax: +61 (0) 8 9258 4039
Address: Unit 5, 24 Burton Street, Cannington WA 6107
Mailing: PO Box 1034, Bentley DC, WA 6983
Email: edsperth@bigpond.net.au
Web: www.explorationservices.com.au